

# Hurricane Advisor

A Product from Hurricane Consulting, Inc & PC Weather Products, Inc.

**From Hurricane Consulting, Inc.**

**Sent: October 28, 2004 @ 1500Z**

**To: B&B Chemical Company**

## Daily Update

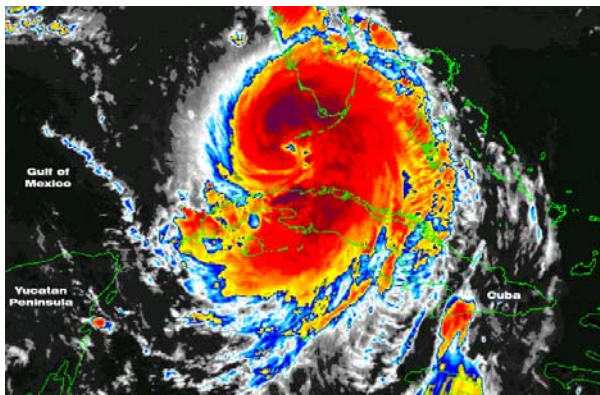
---

At 1500Z newly formed Hurricane Meresa is tracking the Florida Straits, between the Florida Keys and Cuba. At this time Phase 1 of your hurricane plan should go into effect if you are following your guidelines and procedures. Please note at the forward speed and track that Hurricane Meresa is moving its 34 kt. windfield could be near the Northern Gulf Coast within 42 hours. There is still plenty of time to prepare but stay on your procedures. Always remember to think one category higher and also look for a change in forward speed.

Now is the time to do a walk thru audit, looking for areas of weakness in your buildings and vessels. Workorders to be written and any needed repairs made. Laydown yards should be policed and all temporary structures should be audited for possible removal from exposed areas.

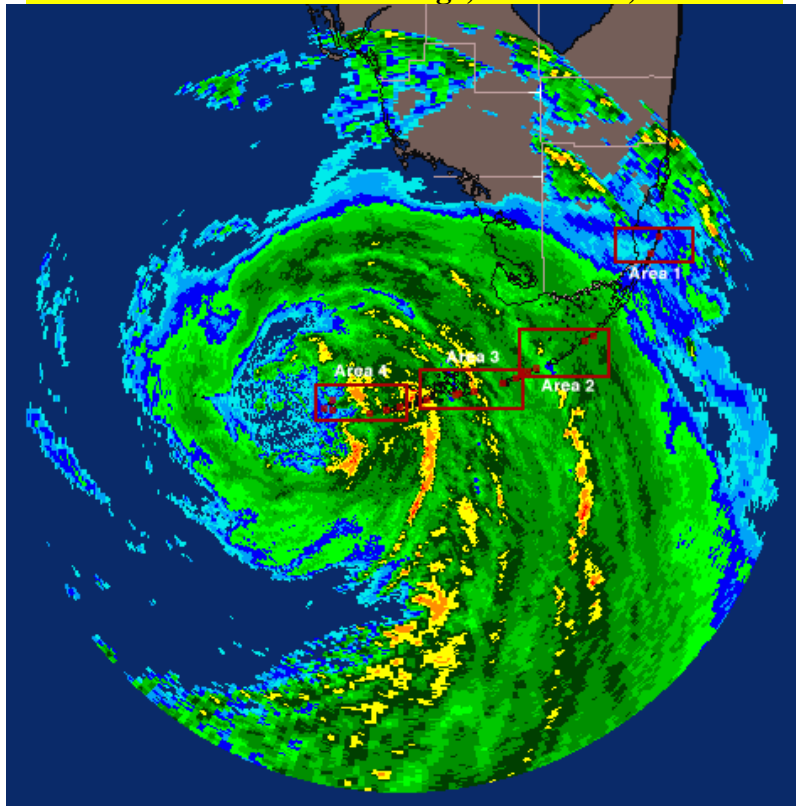
Window coverings should be located and be ready for securing at a later time. All contracts for the Rideout Crew's supplies should be reviewed and contacts made to bring onto site when needed. These are just a few items to remember. Review your procedures now and cover them with your employees and vendors. Be sure you are all on the same page. On last item, check all emergency lighting and power sources, and if needed, contact your local Emergency Manager and National Weather Service Warning Coordination Meteorologist for local emergency information. They will be coordinating any possible evacuation plans if needed with the State Office of Emergency Management.

The next daily update will be forwarded no later than 10/29/2004 – 1600Z

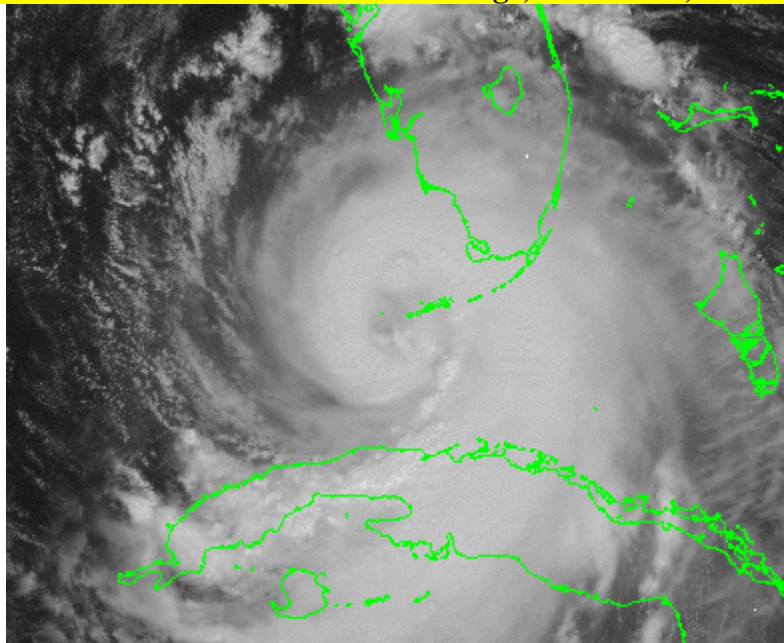


**Hurricane Meresa – 20041028 1500Z**

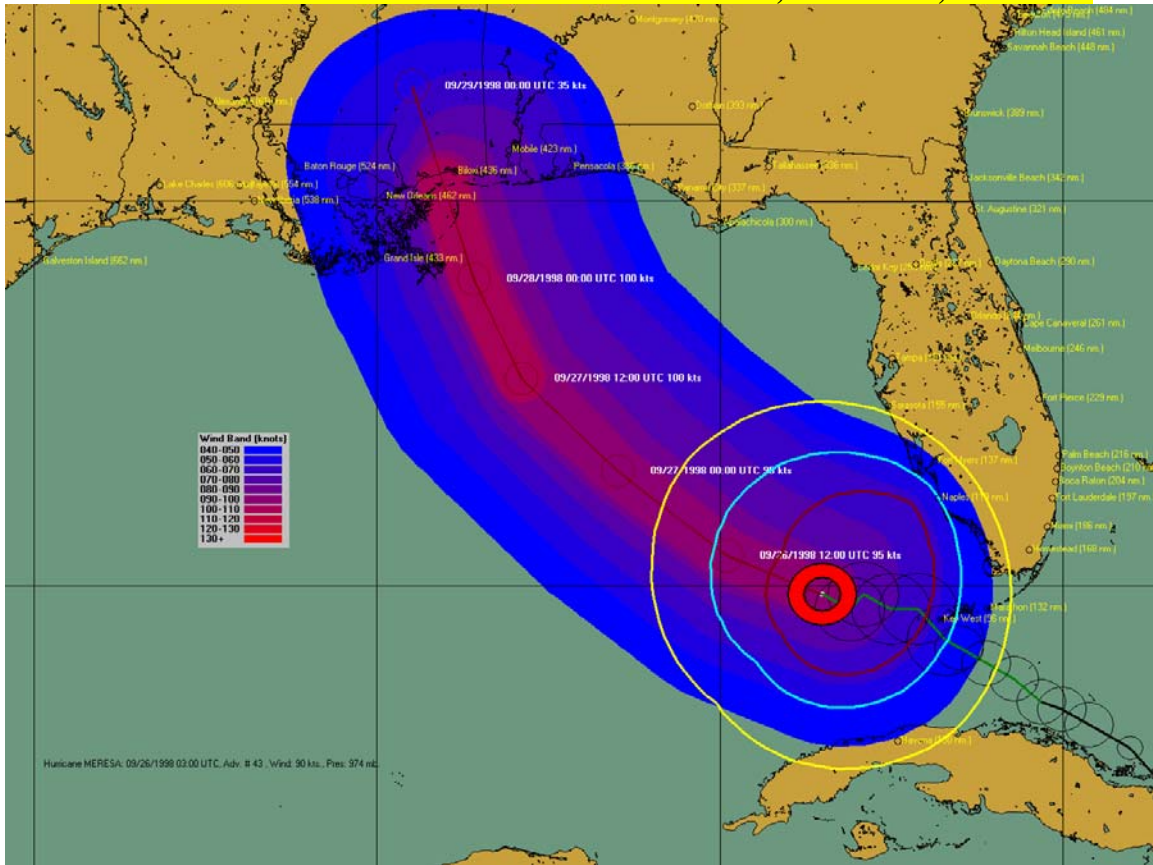
**Hurricane Meresa Radar Image, 10/28/2004, 1500 UTC**



**Hurricane Meresa Visible Satellite Image, 10/28/2004, 1500 UTC**



## Hurricane Meresa Forecast Track and Wind Bands, 10/28/2004, 1500 UTC



## Hurricane MERESA: Impact Summary Report, 10/28/2004 15:00 UTC

Location	State	Max Wind Speed (knots)	Max Wind Speed Time	Closest Approach (nm)	Damage Estimate
Biloxi	MS	100 kts	Monday: 09/28/1998 11:00 UTC	11	Extensive
Mobile	AL	74 kts	Monday: 09/28/1998 12:00 UTC	55	Minimal
New Orleans	LA	64 kts	Monday: 09/28/1998 12:00 UTC	47	Minor
Pensacola	FL	63 kts	Monday: 09/28/1998 05:00 UTC	95	Minor
Grand Isle	LA	57 kts	Monday: 09/28/1998 02:00 UTC	63	Minor
Key West	FL	52 kts	Saturday: 09/26/1998 04:00 UTC	105	Minor
Naples	FL	48 kts	Saturday: 09/26/1998 04:00 UTC	123	Minor
Baton Rouge	LA	44 kts	Monday: 09/28/1998 12:00 UTC	99	Minor
Fort Myers	FL	40 kts	Saturday: 09/26/1998 04:00 UTC	140	Minor
Marathon	FL	38 kts	Saturday: 09/26/1998 04:00 UTC	140	Minor
Havana	CUB	37 kts	Saturday: 09/26/1998 04:00 UTC	137	Minor

**Current National Hurricane Center Advisories:**  
**PUBLIC ADVISORY**

TCPAT2  
BULLETIN  
HURRICANE MERESA ADVISORY NUMBER 43  
NATIONAL WEATHER SERVICE MIAMI FL  
11 AM EDT FRI OCT 28 2004

...MERESA MOVING SLOWLY AWAY FROM THE FLORIDA KEYS...

AT 11 AM EDT...1500Z...THE HURRICANE WARNING FOR THE FLORIDA KEYS AND THE FLORIDA WEST COAST IS REPLACED WITH A TROPICAL STORM WARNING. A TROPICAL STORM WARNING IS NOW IN EFFECT FOR THE FLORIDA KEYS FROM KEY LARGO SOUTHWARD AND FOR THE FLORIDA WEST COAST FROM BAYPORT SOUTHWARD.

SMALL CRAFT SHOULD REMAIN IN PORT FROM STUART TO KEY LARGO UNTIL WINDS AND SEAS SUBSIDE.

A HURRICANE WATCH IS IN EFFECT FOR THE GULF COAST FROM MORGAN CITY LOUISIANA TO ST. MARKS FLORIDA. A TROPICAL STORM WARNING WILL LIKELY BE ISSUED FOR A PORTION OF THIS AREA ON SATURDAY IN EXPECTATION OF TROPICAL STORM FORCE WINDS ON THE LEADING EDGE OF THE HURRICANE REACHING THE AREA SATURDAY NIGHT.

AT 11 AM EDT...1500Z...THE CENTER OF HURRICANE MERESA WAS LOCATED NEAR LATITUDE 24.9 NORTH...LONGITUDE 83.5 WEST OR ABOUT 115 MILES WEST-NORTHWEST OF KEY WEST FLORIDA.

MERESA IS MOVING TOWARD THE WEST NORTHWEST NEAR 8 MPH AND THIS MOTION IS EXPECTED TO CONTINUE THROUGH TONIGHT.

MAXIMUM SUSTAINED WINDS ARE NEAR 105 MPH...165 KM/HR...WITH HIGHER GUSTS. SOME GRADUAL STRENGTHENING IS EXPECTED DURING THE NEXT 24 HOURS.

HURRICANE FORCE WINDS EXTEND OUTWARD UP TO 115 MILES...185 KM... FROM THE CENTER...AND TROPICAL STORM FORCE WINDS EXTEND OUTWARD UP TO 175 MILES...280 KM...MAINLY TO THE EAST.

THE MINIMUM CENTRAL PRESSURE REPORTED BY AIR FORCE HURRICANE HUNTER AIRCRAFT IS 974 MB...28.76 INCHES.

ADDITIONAL RAINFALL TOTALS OF 3 TO 5 INCHES ARE POSSIBLE OVER THE FLORIDA WEST COAST AND THE KEYS.

STORM SURGE FLOODING OF 3 TO 5 FEET ABOVE NORMAL TIDE LEVELS... ACCOMPANIED BY LARGE AND DANGEROUS BATTERING WAVES ARE EXPECTED IN THE WARNING AREA.

ISOLATED TORNADOES ARE POSSIBLE OVER PORTIONS OF THE FLORIDA PENINSULA.

REPEATING THE 11 PM EDT POSITION...24.9 N... 83.5 W. MOVEMENT TOWARD...WEST NORTHWEST NEAR 8 MPH. MAXIMUM SUSTAINED WINDS... 105 MPH. MINIMUM CENTRAL PRESSURE... 974 MB.

AN INTERMEDIATE ADVISORY WILL BE ISSUED BY THE NATIONAL HURRICANE CENTER AT 2 PM EDT FOLLOWED BY THE NEXT COMPLETE ADVISORY AT 5 PM EDT...SATURDAY.

GUINEY

STRIKE PROBABILITIES ASSOCIATED WITH THIS ADVISORY NUMBER CAN BE FOUND UNDER AFOS HEADER MIASPFAT2 AND WMO HEADER WTNT72 KNHC.

## FORECAST DISCUSSION

TCDAT2  
HURRICANE MERESA DISCUSSION NUMBER 43  
NATIONAL WEATHER SERVICE MIAMI FL  
11 AM EDT FRI OCT 28 2004

RADAR AND AIR FORCE RESERVE RECONNAISSANCE AIRCRAFT FIXES DURING THE LAST SEVERAL HOURS INDICATE THAT THE CENTER OF MERESA HAS BEEN WOBBLING WESTWARD. HOWEVER...THE MOST RECENT RADAR POSITION ESTIMATE SUGGESTS THAT THE SYSTEM MAY BE RESUMING A MORE WEST-NORTHWESTWARD HEADING. THE INITIAL MOTION ESTIMATE IS 285/07 KNOTS.

RECON DATA INDICATES THAT THERE HAS BEEN LITTLE OVERALL CHANGE IN MERESA INTENSITY THE PAST SIX HOURS OR SO. THE LATEST AIRCRAFT VORTEX MESSAGE SHOWED A CENTRAL PRESSURE OF 973 MB AND MAXIMUM FLIGHT-LEVEL WINDS OF 94 KNOTS. THE DRY TORTUGAS C-MAN BUOY REPORTED SOUTHERLY WINDS OF 50 KNOTS AND A PRESSURE OF 989.9 MB AT 01Z. THE INITIAL INTENSITY WILL BE HELD AT 90 KNOTS. SATELLITE IMAGERY SHOWS THAT THE DEEPEST CONVECTION IS OCCURRING ON THE EASTERN SIDE OF THE SYSTEM. THE OUTFLOW IS RESTRICTED OVER THE NORTHWEST QUADRANT BUT REMAINS IMPRESSIVE ELSEWHERE. ANALYSES FROM THE COOPERATIVE INSTITUTE FOR METEOROLOGICAL SATELLITE STUDIES AT THE UNIVERSITY OF WISCONSIN SHOW SOME 20-30 KT VERTICAL WIND SHEAR OVER THE NORTHEAST/CENTRAL GULF OF MEXICO. ALTHOUGH THE RIDGE ASSOCIATED WITH MERESA SHOULD LESSEN THE SHEAR AS IT BUILDS NORTHWARD IT STILL MAY HAMPER FURTHER DEVELOPMENT. THE FORECAST CONTINUES THE TREND OF GRADUAL INTENSIFICATION BRINGING MERESA TO CATEGORY THREE STATUS BY 36 HOURS.

THE MODEL TRACK GUIDANCE CONTINUES TO SHOW CONSIDERABLE SCATTER WITH LBAR...UKMET AND NOGAPS SHOWING A 72 HOUR POSITION SOUTH OF THE LOUISIANA COAST WHILE THE GFDL...AVN AND A98E ARE INLAND BETWEEN ALABAMA AND THE FLORIDA PANHANDLE BY 48 HOURS. THE GFDL AND AVN INDICATE THAT MERESA ROTATES AROUND THE 500 MB ANTICYCLONE TO THE EAST. THE EVOLVING SYNOPTIC PATTERN INDICATES THAT THE FORWARD MOTION MAY SLOW.

THE NOAA G-IV JET IS PERFORMING A SYNOPTIC FLOW MISSION OVER THE GULF OF MEXICO THIS EVENING WITH THE DATA TO BE USED TO INITIALIZE THE 00Z GLOBAL MODELS.

WARNINGS MAY BE NECESSARY FOR PORTIONS OF THE WATCH AREA OF THE NORTH GULF COAST SATURDAY.

GUINEY

### FORECAST POSITIONS AND MAX WINDS

INITIAL	28/0300Z	24.9N	83.5W	90 KTS
12HR VT	28/1200Z	25.4N	84.9W	95 KTS
24HR VT	29/0000Z	26.5N	86.5W	95 KTS
36HR VT	29/1200Z	27.7N	87.9W	100 KTS
48HR VT	30/0000Z	29.0N	88.6W	100 KTS
72HR VT	31/0000Z	31.5N	89.5W	35 KTS...INLAND